


Department of Engineering
Dan Gaillet, P.E., County Engineer

3137 South Liberty Street, Canton, MS 39046
Office (601) 790-2525 FAX (601) 859-3430

MEMORANDUM

January 30, 2018

To: Sheila Jones, Supervisor, District I
Trey Baxter, Supervisor, District II
Gerald Steen, Supervisor, District III
David Bishop, Supervisor, District IV
Paul Griffin, Supervisor, District V

From: Dan Gaillet, P.E. 
County Engineer

Re: Sink Hole
118 Bridgewater Drive
Lake Caroline

A sink hole has formed due to the failure of an 18" pipe that carries roadway storm water from Bridgewater Drive across private property to Lake Caroline.

The Engineering Department suspects that the pipe has separated which is causing water to back up on Bridgewater Drive and creating a dangerous sink hole. Repairs have been quoted at \$3,400.

It is the recommendation of the Engineering Department that the Board approve a temporary construction easement and authorize repairs to ensure that storm water is moved from point-to-point to prevent damage to the roadway and further damage to the storm water system.

Therefore, it is in the best interest of the County and the public's health, safety and welfare to make the repairs, due to:

- Pipe has failed restricting flow off the roadway; and
- A dangerous sink hole has formed due to pipe failure.

SHEILA JONES
District One

TREY BAXTER
District Two

GERALD STEEN
District Three

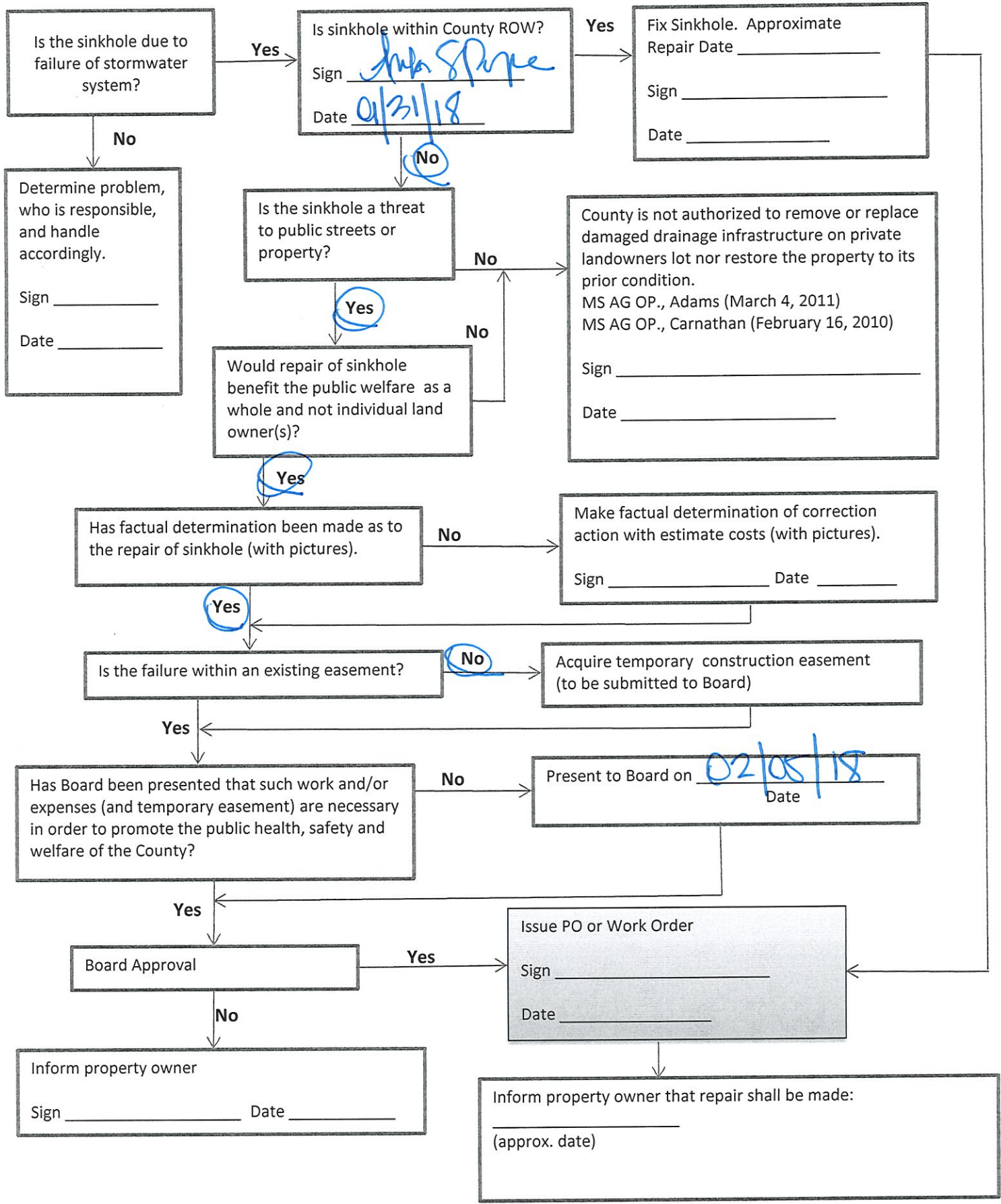
DAVID BISHOP
District Four

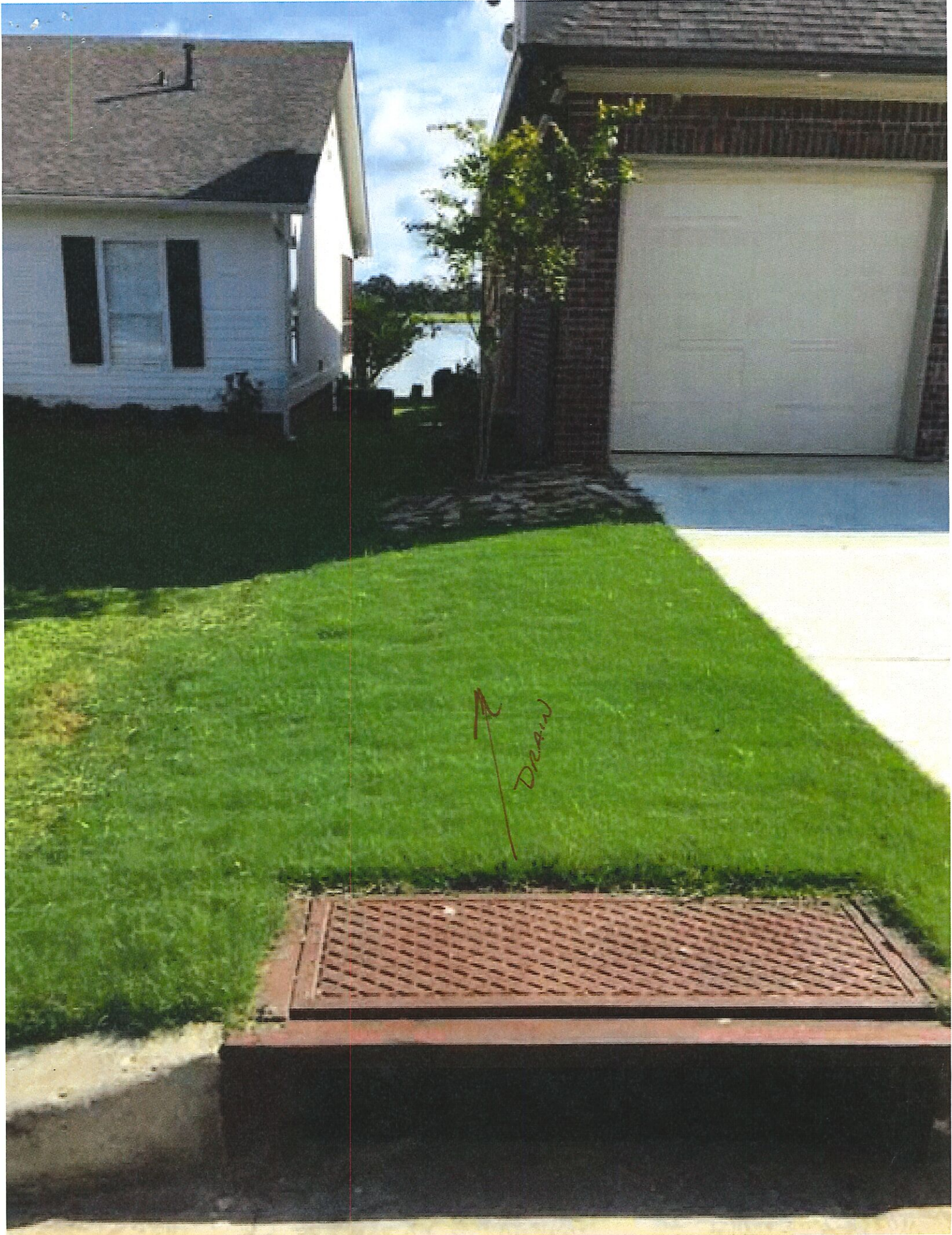
PAUL GRIFFIN
District Five

SINKHOLE FLOW CHART

LOCATION: 118 Bridgewater Dr.

DATE: 01/31/18







HOLE